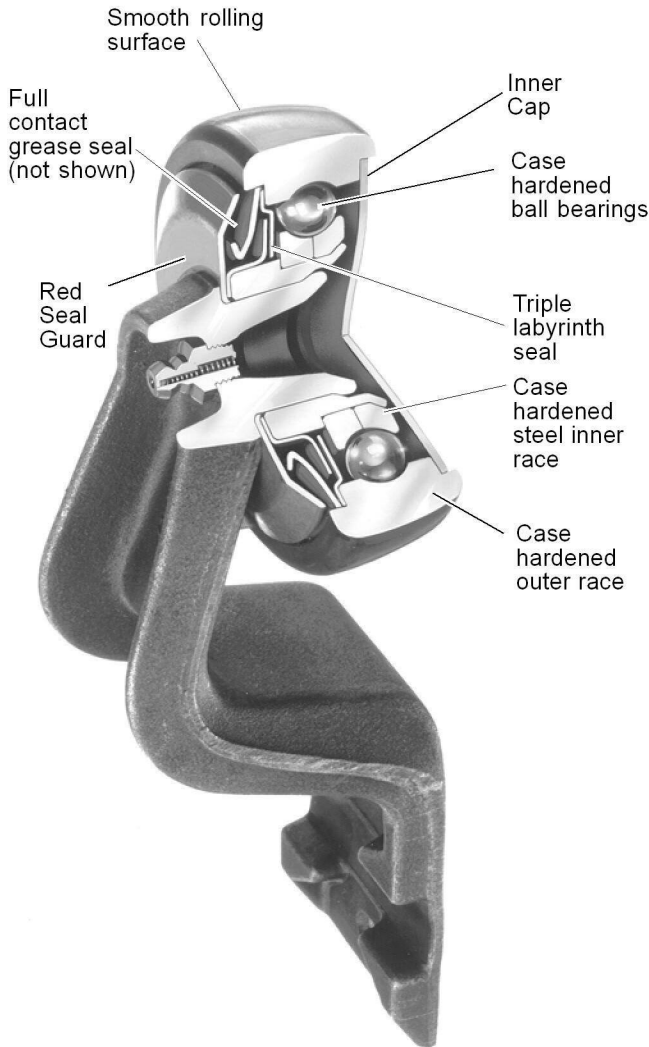




Standard Red Seal® Trolley Wheels

Standard trolley wheels are available with either retainer type trolley wheels or full ball complement trolley wheels. Both have triple labyrinth seals with deep case hardened races and case hardened ball bearings.



Retainer type wheels have been developed specifically for rugged conveyor applications. The wheel contains a Conrad type single row precision bearing in steel or composite retainer ring with components and clearances designed for the most adverse conveyor applications. This wheel has the lowest friction and highest load rating possible for a ball bearing of this size and style, ensuring longer life and lower maintenance under all conditions. ***This wheel has a maximum temperature rating of 200°F (93.3°C).***

Full ball complement type wheels have a 41% greater load carrying capacity than the Retainer style. This is reflected in longer bearing life. Because the full complement trolley wheel contains no retainer or retaining ring in its assembly, it has become the preferred trolley wheel for use in applications where mechanical components are regularly subjected to dirt, grit, moisture, etc. No retainer lessens the likelihood of trolley wheel “freeze-up” due to the influx of contaminants. ***Maximum temperature rating is 450°F (232.2°C).***

All wheels are available less the seals and inner caps for open bearing operation, when using injection or spray type automatic oil lubrication.

Trolley Wheel Options

Optional Full Contact Grease Seals - Additional protection from outside contaminants can be provided by fitting Red Seal Trolleys with a full contact grease seal.

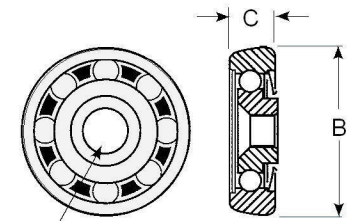
This grease seal is mounted around the formed channel of the Red Seal Guard and seats against the smooth inside surface of the guard. Two seal materials are available: one for ambient temperatures up to 200°F (93.3°C) and one for high temperatures up to 450°F (232.2°C).

Optional Red Seal Guard™ - The Red Seal Guard is a contaminant resistant shield designed for use with the standard Red Seal 4" and 6" trolley wheels. Zinc-plated for extra protection against corrosion, this shield is recommended for trolleys that are subjected to extremely dirty, gritty, or wet operating conditions.



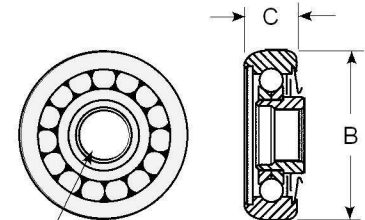
Convex Face Trolley Wheels

Wheel Size	Wheel Type	Part No.	A	B	C	Wt.	Labyrinth Seals	Plain Inner Cap
3"	Retainer	6800	3/8	2-21/64"	5-3/64"	.60	Yes	5189
3"	Full Comp.	16011	3/8					
3"	Retainer	6802	5/8					
3"	Full Comp.	16015	1/2"	3-1/4"	1-5/32	.60	Yes	15574
4"	Retainer	15908	1/2"					
4"	Retainer	15907	1"					
4"	Full Comp.	15911	1"	4-15/16"	1-27/64"	1.41	No	5195
4"	Full Comp.	15917	1"					
4"	Full Comp.	15917	1"					
6"	Retainer	15954	1"	4-15/16"	1-27/64"	1.31	No	5195
6"	Full Comp.	15957	1"					
6"	Full Comp.	15964	1"					



A = Bore Dia.
Retainer Type - Convex Face

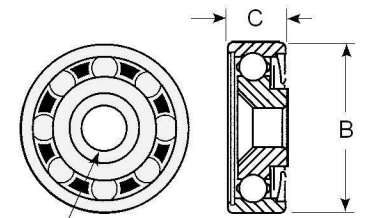
METRIC								
3"	Retainer	6800	9.5	59.13	21.1	0.27	Yes	5189
3"	Full Comp.	16011	9.5					
3"	Retainer	6802	16.9					
3"	Full Comp.	16015	12.7	82.6	29.4	0.27	Yes	15574
4"	Retainer	15908	12.7					
4"	Retainer	15907	25.4					
4"	Full Comp.	15911	25.4	125.4	36.1	0.58	No	5195
4"	Full Comp.	15917	25.4					
4"	Full Comp.	15917	25.4					
6"	Retainer	15954	25.4	125.4	36.1	0.64	No	5195
6"	Full Comp.	15957	25.4					
6"	Full Comp.	15964	25.4					



A = Bore Dia.
Full Complement - Convex Face

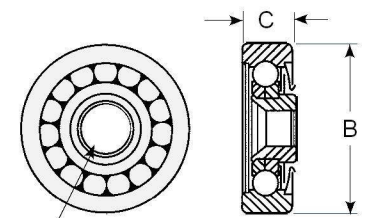
Flat Face Trolley Wheels

Wheel Size	Wheel Type	Part No.	A	B	C	Wt. lb	Labyrinth Seals	Plain Inner Cap
3"	Full Comp.	16016	1/2	2 1/8	53/64	.60	Yes	5189
4"	Retainer	9572	1	2 15/16	1 5/32	1.06		15574
4"	Full Comp.	10214	1		1 11/64	1.44		
6"	Retainer	15967	1	4 9/16	1 27/64	4.19	No	5195



A = Bore Dia.
Retainer Type - Flat Face

METRIC								
3"	Full Comp.	16016	12.7	53.98	21.1	0.27	Yes	5189
4"	Retainer	9572	25.4	74.6	29.4	0.48		15574
4"	Full Comp.	10214	25.4		29.4	0.65		
6"	Retainer	15967	25.4	115.9	36.2	1.90	No	5195



A = Bore Dia.
Full Complement - Flat Face

Inverted or free trolley wheels require an inner cap with grease fitting.

Part numbers are: 3" wheel - #15930

4" wheel - #15929

6" wheel - #8249

Note:

The trolley wheels described on this page are stock items. Custom wheel configurations are available. Contact Webb Sales for further information.



3" Overhead Trolleys

Jervis B. Webb Company

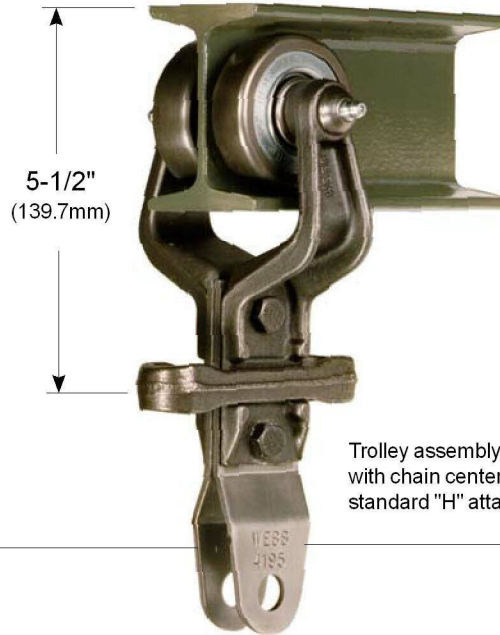
Call Toll Free: 1-800-932-2178

Fax: 1-248-553-1253

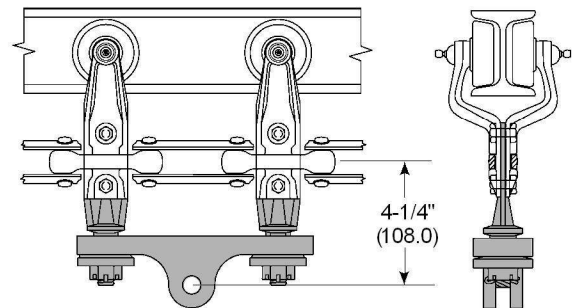
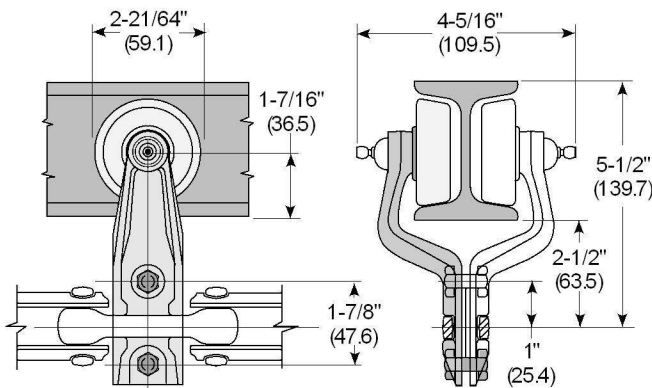
3" Trolley with 2-1/2" Drop

- Chain size X-348
- Trolley Center Spacing 6" min. (152mm)
36" max.(914mm)
- Single Trolley Load Capacity 200lb (91kg)
- Load Capacity W/Load Bar 400lb 181kg)

- Forged carbon steel brackets
- Standard triple labyrinth seal construction
- Rugged 2 bolt attachment connection
- Pressure type grease fittings
- Trolley wheels are riveted to the trolley bracket



Trolley assembly shown with chain center link and standard "H" attachment



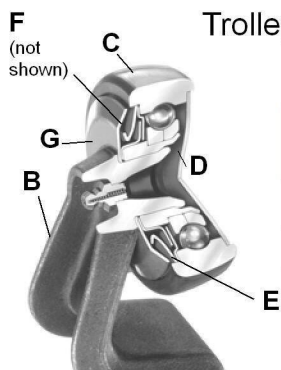
NOTE: Two half trolleys and two nut & bolt assemblies are required to make a complete trolley assembly.

4197 Bolt & Nut Assembly includes:

- 1- # 13434 Bolt
 - 1- # 57212 Nut
-

3516 3" Load Bar Assembly includes:

- 2 - # 4196 "B" Attachments
- 1 - # 4199 Load Bar
- 2 - # 5867 Spherical Washers
- 2 - # 8443 Tube Spacers
- 2 - # 56550 Slotted Hex. Nuts
- 2 - # 56065 Cotter Pins



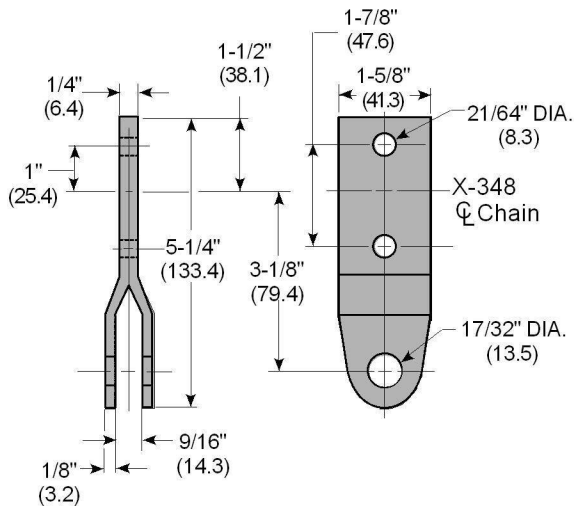
Trolley Option Specifications

	B	C	D	E	F	G
1/2 Trolley Part No.	Trolley Bracket	Load Wheel Type	Inner Cap	Triple Labyrinth Seal	Full Contact Grease Seal	Red Seal Guard
14631	3361	FC	Yes	Yes	No	No
69600	3361	FC	No	No	No	No
75916	3361	FC	No	Yes	No	No



4195 "H" Attachment

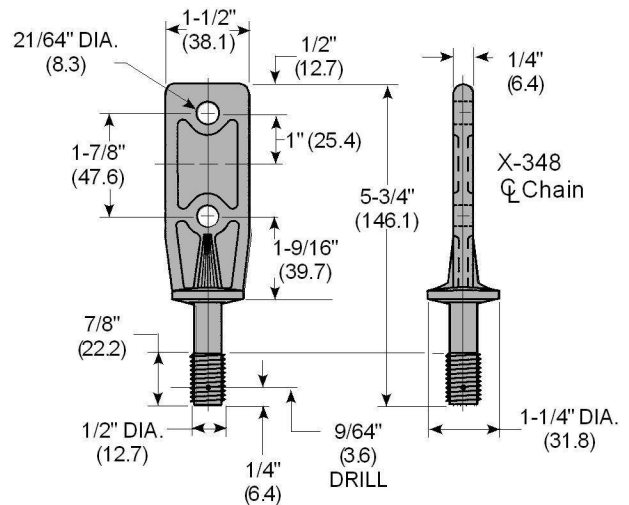
This attachment is the most widely used trolley attachment. It is a 2-piece formed steel construction suitable for almost any type of hook, rack or tray.



Wt: .44 lb .20 kg

4196 "B" Attachment

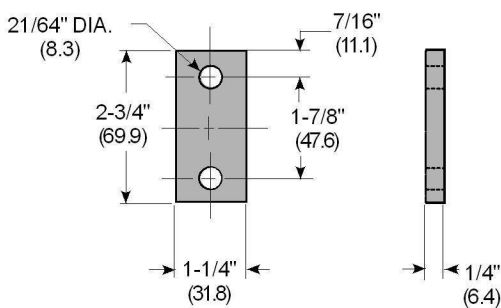
The primary use for this attachment is to support a 4199 load bar, but it is also used for many other applications. It is a steel forging with a threaded stud.
May require: 56550 Nut and 56065 Cotter pin



Wt: .44 lb (.20kg)

4194 "I" Attachment

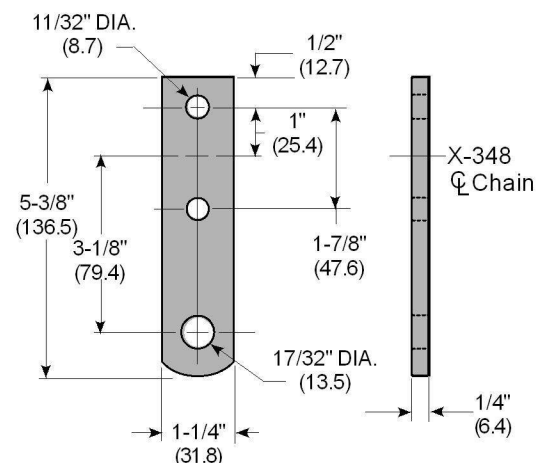
This attachment is used as a filler on intermediate trolleys that do not carry a load. **Also available in non-metallic material for noise reduction.**



Wt: .25 lb (11kg)

4193 "C" Attachment

This attachment is used when a carrier design includes a clevis. It can also be used with a bent rod hook to carry light parts.



Wt: .48 lb .22 kg



4" Overhead Trolleys

Jervis B. Webb Company

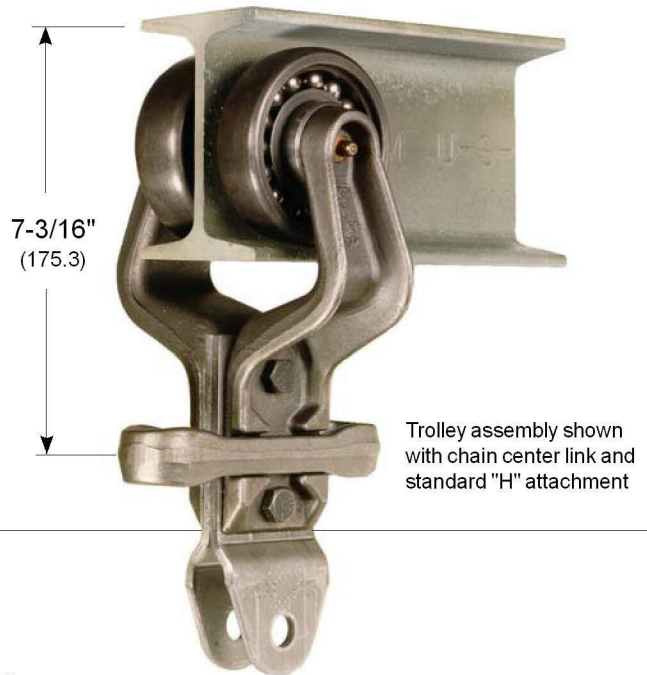
Call Toll Free: 1-800-932-2178

Fax: 1-248-553-1253

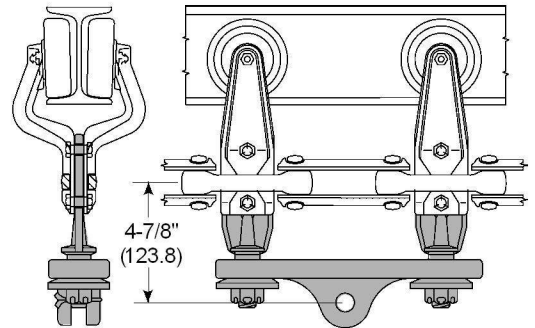
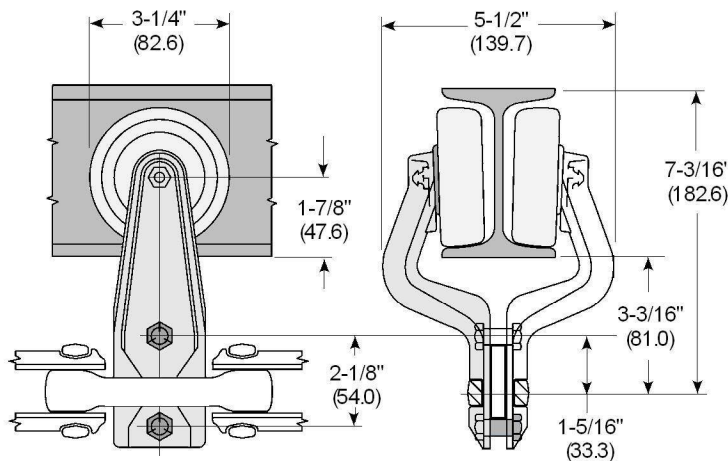
4" Trolley with 3-3/16" Drop

- Chain Size X-458
- Trolley Center Spacing 8" min. (202)
32" max. (813)
- Single Trolley Load Capacity 400lb (181kg)
- Load Capacity W/Load Bar 800lb (363kg)

- Forged carbon steel brackets
- Standard triple labyrinth seal construction
- Rugged 2 bolt attachment connection
- Pressure type grease fittings
- Trolley wheels are swaged to bracket
- Optional Red Seal Guard full contact grease seal



Trolley assembly shown with chain center link and standard "H" attachment



NOTE: Two half trolleys and two nut & bolt assemblies are required to make a complete trolley assembly.

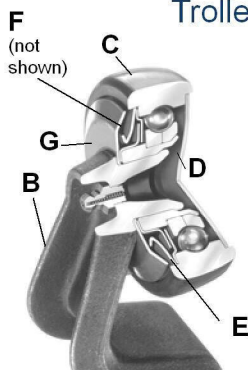
4213 Bolt & Nut Assembly includes:

- 1 - #11979 Bolt
- 1 - # 56494 Nut

1325 4" Load Bar Assembly includes:

- 2 - # 4221 "B" Attachments
- 1 - # 4060 Load Bar
- 2 - # 4004 Spherical Washers
- 2 - # 6493 Tube Spacers
- 2 - # 56551 Slotted Hex. Nuts
- 2 - # 56074 Cotter Pins

Trolley Option Specifications



	B	C	D	E	F	G
1/2 Trolley Part No.	Trolley Bracket	Load Wheel Type	Inner Cap	Triple Labyrinth Seal	Full Contact Grease Seal	Red Seal Guard
3378	3377	Retainer	Yes	Yes	No	No
15308M1	3377	FC	Yes	Yes	No	No
15308	3377	FC	No	Yes	No	No
74597	3377	FC	Yes	No	No	No
15309	3377	FC	No	No	No	No



4" Overhead Trolleys

Jervis B. Webb Company

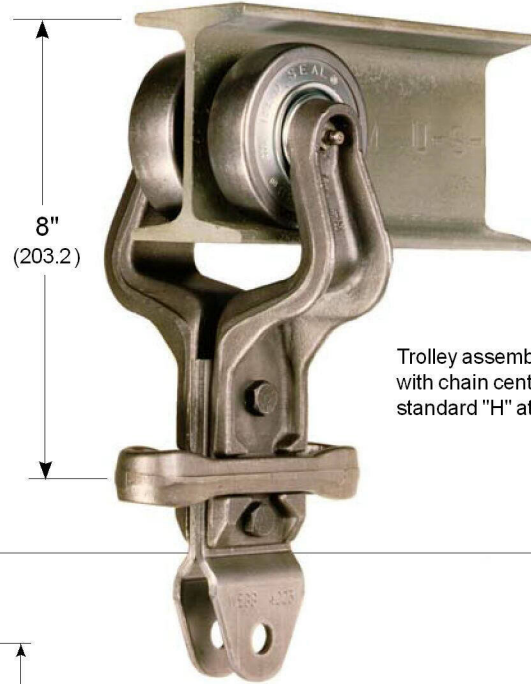
Call Toll Free: 1-800-932-2178

Fax: 1-248-553-1253

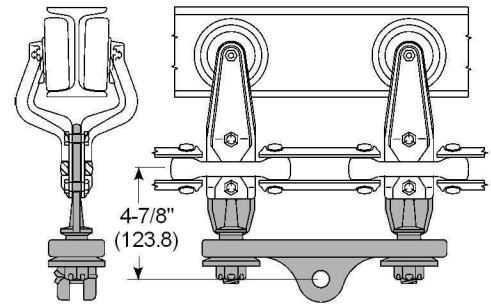
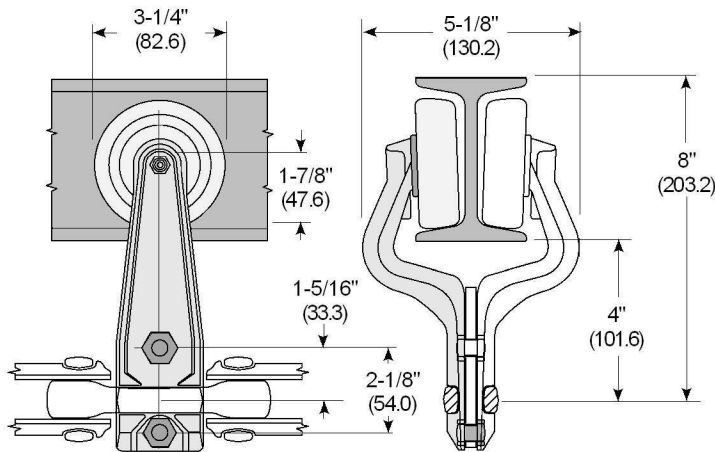
4" Trolley with 4" Drop

- Chain Size X-458
- Trolley Center Spacing 8" min. (203.2)
32" max. (812.8)
- Load Capacity 400lb (181kg)
- Load Capacity W/Load Bar 800lb (363kg)

- Forged carbon steel brackets
- Standard triple labyrinth seal construction
- Rugged 2 bolt attachment connection
- Pressure type grease fittings
- Trolley wheels are swaged to bracket
- Optional Red Seal Guard full contact grease seal



Trolley assembly shown with chain center link and standard "H" attachment



NOTE: Two half trolleys and two nut & bolt assemblies are required to make a complete trolley assembly.

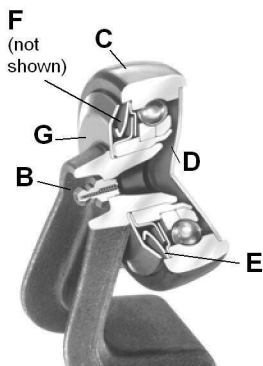
4213 Bolt & Nut Assembly includes:

- 1- # 11979 Bolt
 - 1- # 56494 Nut
-

#1325 4" Load Bar Assembly includes:

- 2- # 4221 - "B" Attachments
- 1- # 4060 - Load Bar
- 2- # 4004- Spherical Washers
- 2- # 6493 - Tube Spacers
- 2- # 56551- Slotted Hex. Nuts
- 2- # 56074 - Cotter Pins

Trolley Option Specifications



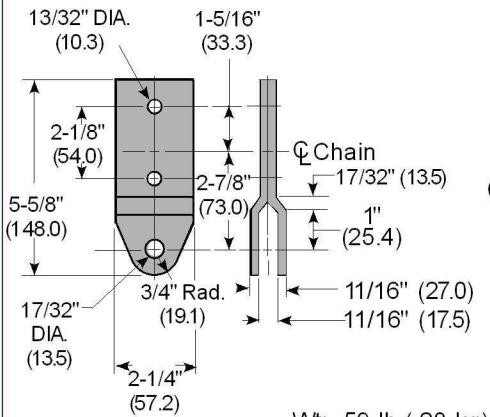
	B	C	D	E	F	G
1/2 Trolley Part No.	Trolley Bracket	Load Wheel Type	Inner Cap	Triple Labyrinth Seal	Full Contact Grease Seal	Red Seal Guard
16843	10984	Retainer	Yes	Yes	No	No
14282	10984	FC	Yes	Yes	No	No
14282M1	10984	FC	No	Yes	No	No
77696	10984	FC	Yes	No	No	No
86183	10984	FC	No	No	No	No
77465	10984	FC	Yes	Yes	Yes*	Yes
85244	10984	FC	Yes	Yes	No	Yes

* High Temperature



4233 "H" Attachment

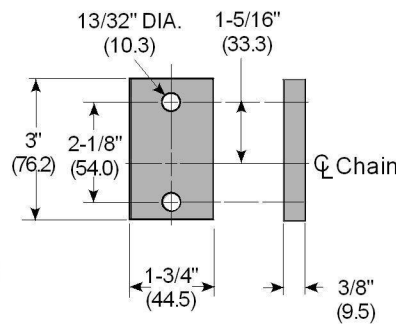
The most widely used trolley attachment. It is a 2-piece formed steel construction suitable for almost any type of hook, rack or tray.



Wt: .59 lb (.28 kg)

4224 "I" Attachment

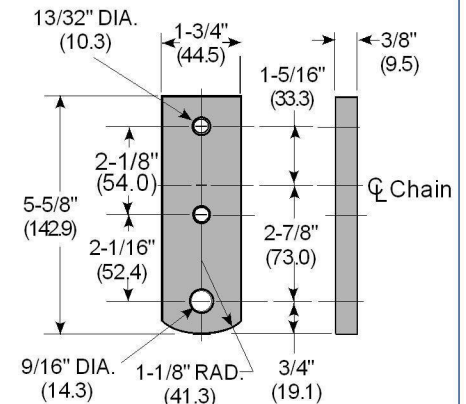
Used as a filler on intermediate trolleys that do not carry a load. **Also available in non-metallic material for noise reduction.**



Wt: 47 lb (.21 kg)

4222 "C" Attachment

Used when a carrier design includes a clevis. It can also be used with a bent rod hook to carry light parts.

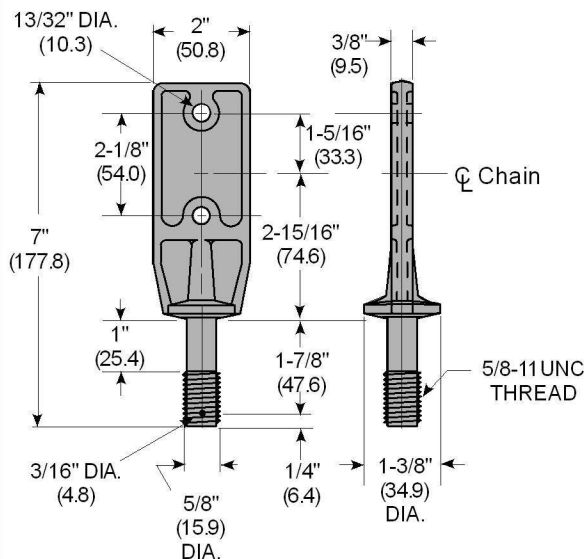


Wt: .94 lb (.43 kg)

4221 "B" Attachment

Primary use is to support a 4060 load bar, but it is also used for many other applications. It is a steel forging with a threaded stud.

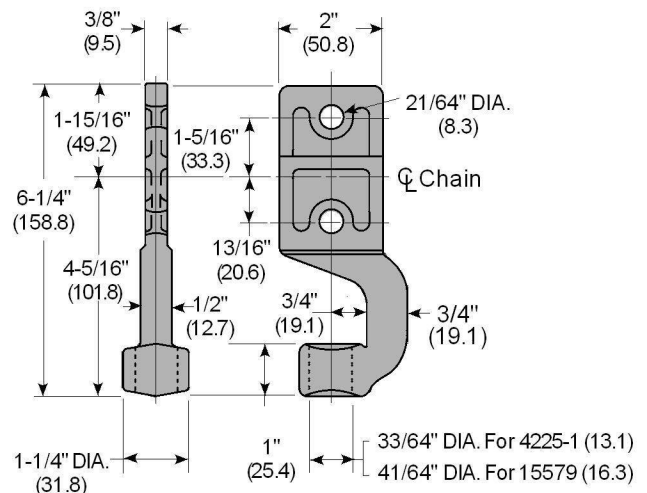
May require: 56551 Nut and 56074 Cotter pin



Wt: 1.0 lb (.45 kg)

4225 "J" Attachment

Used for suspending 1/2" or 5/8" diameter rods permitting periodic rotation of rod carriers. Specify rod diameter when ordering.



Wt: 1.31 lb (.59 kg)



6" Overhead Trolleys

Jervis B. Webb Company

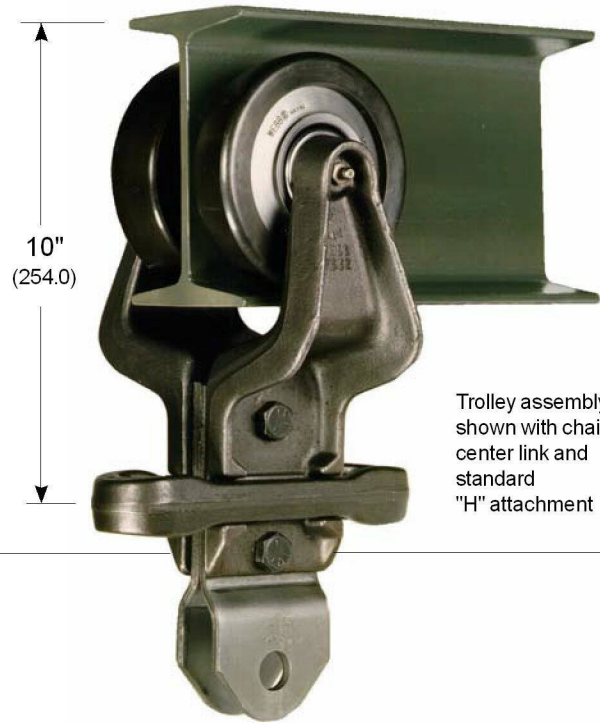
Call Toll Free: 1-800-932-2178

Fax: 1-248-553-1253

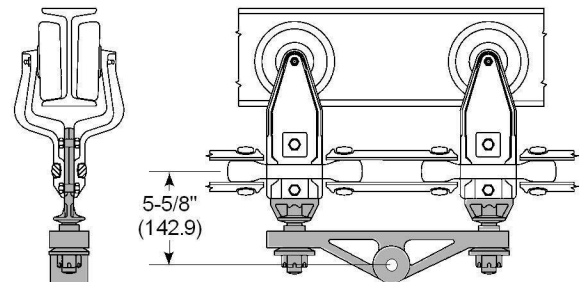
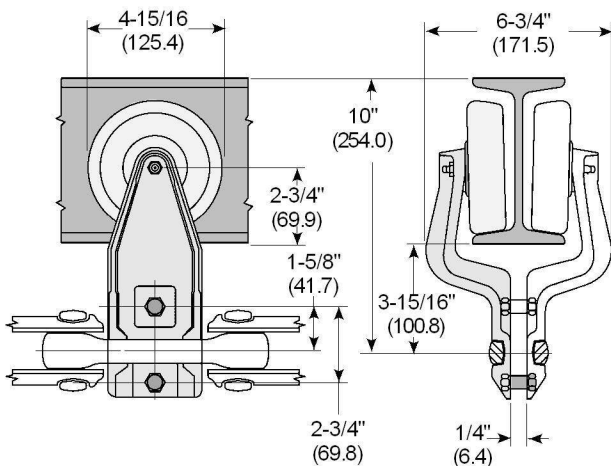
6" Trolley with 4" Drop

- Chain Size X-678
- Trolley Center Spacing 12" min. (304.8)
36" max. (914.4)
- Load Capacity 1,200lb (544kg)
- Load Capacity W/Load Bar 2,400lb (1088kg)

- Forged carbon steel brackets
- Standard triple labyrinth seal construction
- Rugged 2 bolt attachment connection
- Pressure type grease fittings
- Trolley wheels are swaged to the trolley bracket
- Optional Red Seal Guard full contact grease seal



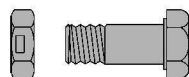
Trolley assembly shown with chain center link and standard "H" attachment



NOTE: Two half trolleys and two nut & bolt assemblies are required to make a complete trolley assembly.

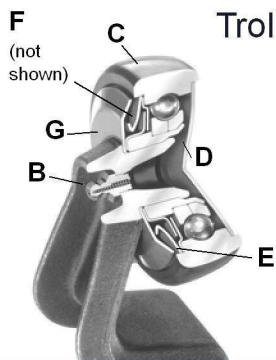
4243 Bolt & Nut Assembly includes:

- 1- # 13464 Bolt
- 1- # 56495 Nut



#3860 6" Load Bar Assembly includes:

- 2- # 4249 "B" Attachments
- 1- # 9484 Load Bar
- 2- # 4250 Spherical Washers
- 2- # 5687 Tube Spacers
- 2- # 56553 Slotted Hex. Nuts
- 2- # 56085 Cotter Pins



Trolley Option Specifications

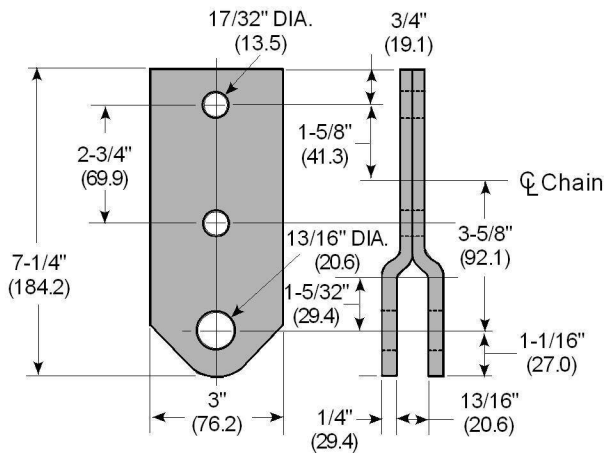
	B	C	D	E	F	G
1/2 Trolley Part No.	Trolley Bracket	Load Wheel Type	Inner Cap	Triple Labyrinth Seal	Full Contact Grease Seal	Red Seal
100504	7662	FC	Yes	Yes	No	No

Custom wheel configurations are also available.



4246 "H" Attachment

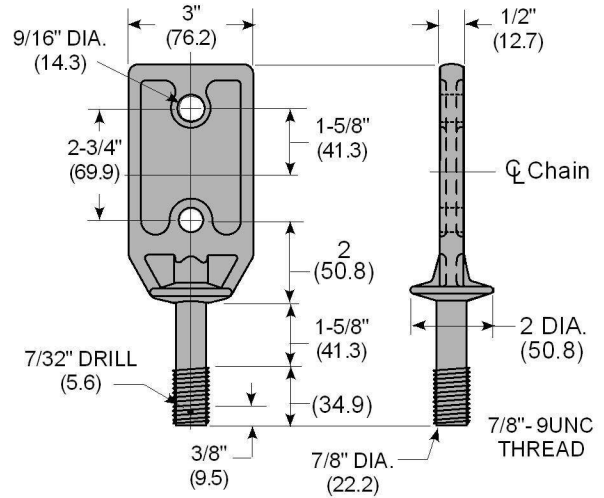
This attachment is the most widely used trolley attachment. It is a 2-piece formed steel construction suitable for almost any type of hook, rack or tray.



Wt: 1.6 lb (.7 kg)

4249 "B" Attachment

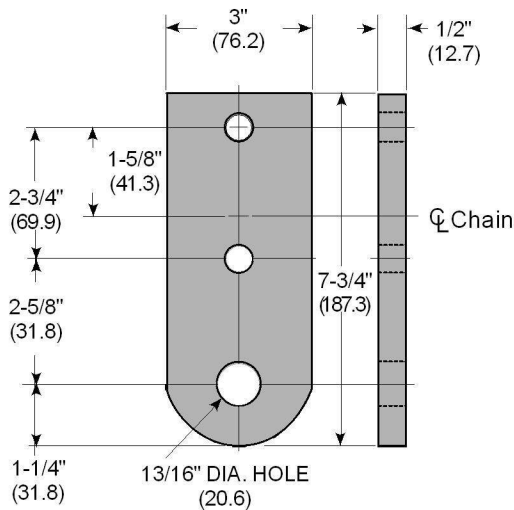
The primary use of this attachment is to support a 9484 load bar, but it is also used for many other applications. It is a steel forging with a threaded stud. **May require: 56553 Nut and 56085 Cotter pin**



Wt: 2.25 lb (1.02 kg)

4245 "C" Attachment

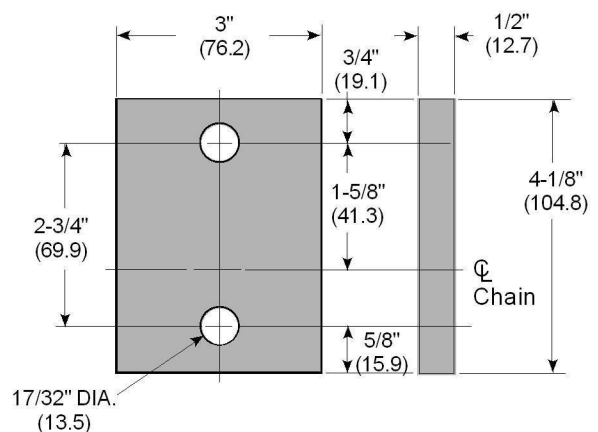
This attachment is used when a carrier design includes a clevis. It can also be used with a bent rod hook to carry light parts.



Wt: 3.0 lb (1.4 kg)

4247 "I" Attachment

This attachment is used as a filler on intermediate trolleys that do not carry a load. **Also available in non-metallic material for noise reduction.**



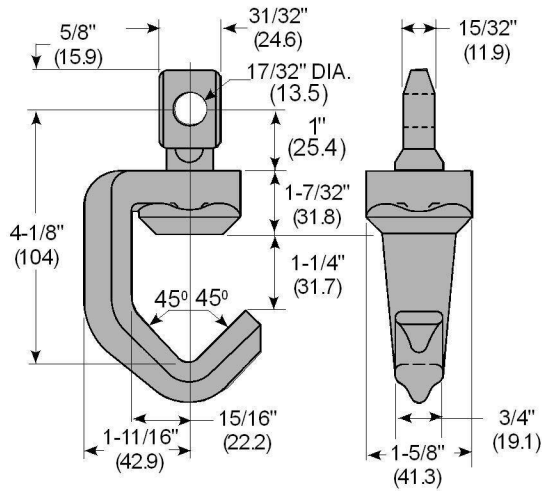
Wt: 1.59 lb (.7 kg)



10560 90° Indexing Swivel Hook Assy.

Made of malleable or ductile iron, this indexing swivel has a 125 lb (56.7kg) capacity rating. It is used with X-348 and X-458 trolley "H" attachments.

Assembly consists of:
6513 - Shank
16611 - Hook

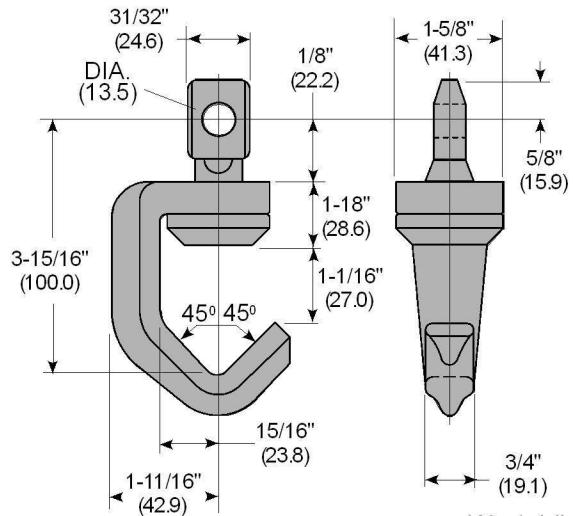


Wt: 1.4 lb (.62 kg)

10555 90° Non-Indexing Swivel Hook Assy.

Made of malleable or ductile iron, this swivel has a 125lb (56.7kg) capacity and is used with X-348 and X458 trolley "H" attachments.

Assembly consists of:
10554 - Shank
16610 - Hook

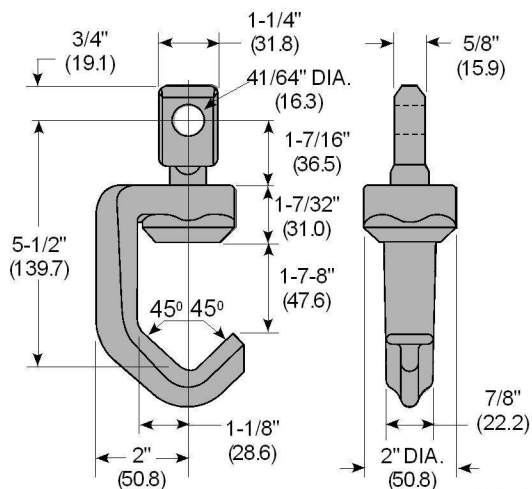


Wt: 1.4 lb (.64 kg)

14171 90° Indexing Swivel Hook Assy

Made of malleable iron, this indexing swivel has a 200lb (90.7kg) capacity rating. It is used with X-458 and X-678 trolley "H" attachments.

Assembly consists of:
8208 - Shank
8207 - Hook

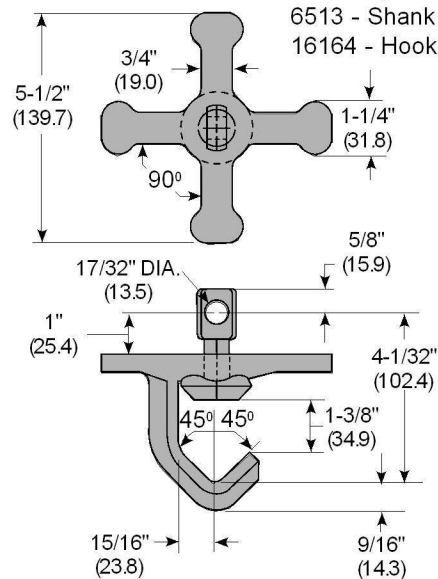


Wt: 2.16 lb (1.0 kg)

8345 90° Star Wheel Indexing Swivel Assy.

Made of malleable or ductile iron, this swivel has a 125lb (56.7kg) capacity rating and is used with X-348 and X-458 trolley "H" attachments.

Assembly consists of:
6513 - Shank
16164 - Hook



Wt: 1.94 lb (.88 kg)